



# SCHEMATIC DIAGRAM

23 CANBERRA CRESCENT S(757078)				
UNIT/FLOOR	1	2	3	4
11		C5	C3	C6
10	C1	C5	C3	C6
9	C1	C5	C3	C6
8	C1	C5	C3	C6
7	C1	C5	C3	C6
6	C1	C5	C3	C6
5	C1	C5	C3	C6
4	C1	C5	C3	C6
3	C1	C5	C3	C6
2	C1	C5	C3	C6
1			C3-P	

25 CANBERRA CRESCENT S(757079)				
UNIT/FLOOR	5	6	7	8
11	C5		C1	C3
10	C5	C4a	C1	C3
9	C5	C4a	C1	C3
8	C5	C4a	C1	C3
7	C5	C4a	C1	C3
6	C5	C4a	C1	C3
5	C5	C4a	C1	C3
4	C5	C4a	C1	C3
3	C5	C4a	C1	C3
2	C5	C4a	C1	C3
1		C4a-P	C1-P	C3-P

27 CANBERRA CRESCENT S(757080)				
UNIT/FLOOR	9	10	11	12
11		C5a	C3	D1
10	C1	C5a	C3	D1
9	C1	C5a	C3	D1
8	C1	C5a	C3	D1
7	C1	C5a	C3	D1
6	C1	C5a	C3	D1
5	C1	C5a	C3	D1
4	C1	C5a	C3	D1
3	C1	C5a	C3	D1
2	C1	C5a	C3	D1
1	C1-P	C5a-P	C3-P	D1-P

29 CANBERRA CRESCENT S(757081)				
UNIT/FLOOR	13	14	15	16
11		C1b	C6a	C2
10	C2a	C1b	C6a	C2
9	C2a	C1b	C6a	C2
8	C2a	C1b	C6a	C2
7	C2a	C1b	C6a	C2
6	C2a	C1b	C6a	C2
5	C2a	C1b	C6a	C2
4	C2a	C1b	C6a	C2
3	C2a	C1b	C6a	C2
2	C2a	C1b	C6a	C2
1	C2a-P	C1b-P	C6a-P	C2-P

31 CANBERRA CRESCENT S(756929)				
UNIT/FLOOR	17	18	19	20
13	C2	C6		C2
12	C2	C6	C4	C2
11	C2	C6	C4	C2
10	C2	C6	C4	C2
9	C2	C6	C4	C2
8	C2	C6	C4	C2
7	C2	C6	C4	C2
6	C2	C6	C4	C2
5	C2	C6	C4	C2
4	C2	C6	C4	C2
3	C2	C6	C4	C2
2	C2	C6	C4	C2
1	C2-P	C6-P	C4-P	C2-P

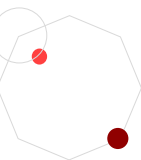
33 CANBERRA CRESCENT S(756930)				
UNIT/FLOOR	21	22	23	24
13	C2a	C1		C2
12	C2a	C1	C4	C2
11	C2a	C1	C4	C2
10	C2a	C1	C4	C2
9	C2a	C1	C4	C2
8	C2a	C1	C4	C2
7	C2a	C1	C4	C2
6	C2a	C1	C4	C2
5	C2a	C1	C4	C2
4	C2a	C1	C4	C2
3	C2a	C1	C4	C2
2		C1	C4	C2
1		C1-P	C4-P	C2-P

35 CANBERRA CRESCENT S(756931)				
UNIT/FLOOR	25	26	27	28
13	C1a	C7		C1
12	C1a	C7	C3	C1
11	C1a	C7	C3	C1
10	C1a	C7	C3	C1
9	C1a	C7	C3	C1
8	C1a	C7	C3	C1
7	C1a	C7	C3	C1
6	C1a	C7	C3	C1
5	C1a	C7	C3	C1
4	C1a	C7	C3	C1
3	C1a	C7	C3	C1
2			C3	C1
1			C3-P	C1-P

37 CANBERRA CRESCENT S(756932)				
UNIT/FLOOR	29	30	31	32
13	C1a	D2		C1
12	C1a	D2	C3	C1
11	C1a	D2	C3	C1
10	C1a	D2	C3	C1
9	C1a	D2	C3	C1
8	C1a	D2	C3	C1
7	C1a	D2	C3	C1
6	C1a	D2	C3	C1
5	C1a	D2	C3	C1
4	C1a	D2	C3	C1
3	C1a	D2	C3	C1
2		D2	C3	C1
1		D2-P	C3-P	C1-P

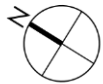
39 CANBERRA CRESCENT S(756933)				
UNIT/FLOOR	33	34	35	36
13	C1	C5		C1
12	C1	C5	C3	C1
11	C1	C5	C3	C1
10	C1	C5	C3	C1
9	C1	C5	C3	C1
8	C1	C5	C3	C1
7	C1	C5	C3	C1
6	C1	C5	C3	C1
5	C1	C5	C3	C1
4	C1	C5	C3	C1
3	C1	C5	C3	C1
2	C1	C5	C3	C1
1			C3-P	C1-P

Show Unit Type Represented in Sales Gallery			
Unit Type	Bedroom Type	Area (sqm)	Area (sqft)
C1	3 BR	82	883
C6	3 BR	116	1,249
D2	4 BR	130	1,399





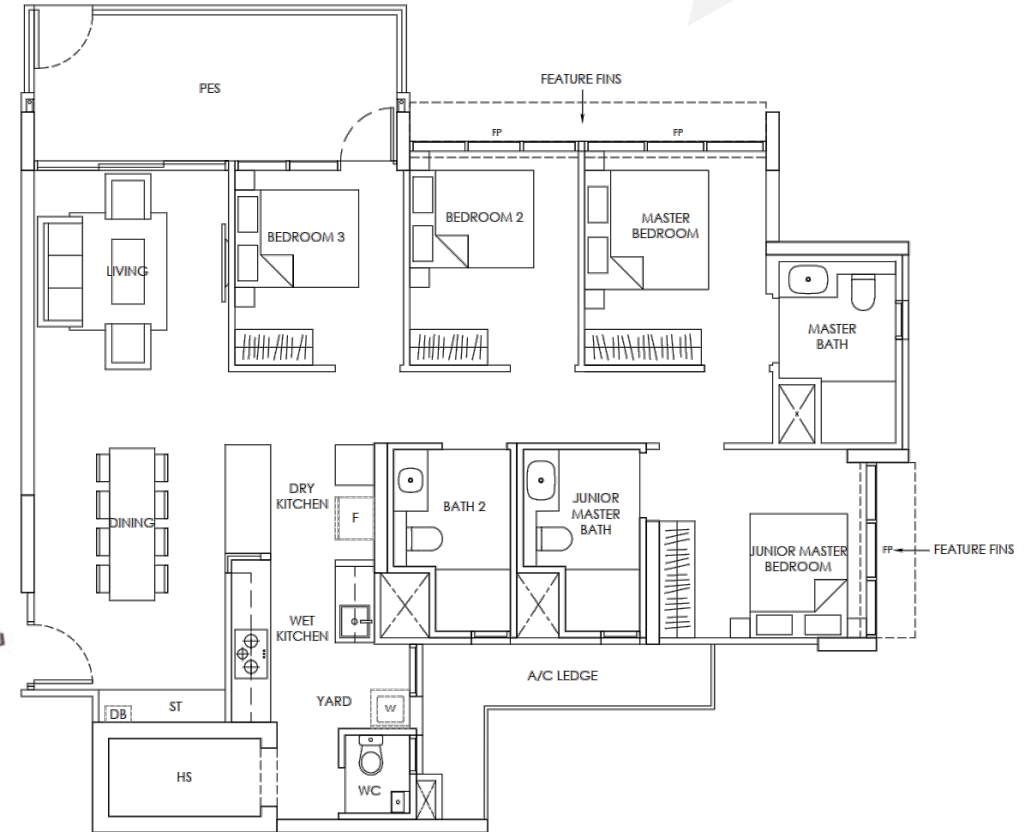
# 4-BEDROOM PES



## TYPE D1-P

4 - BEDROOM  
130 sqm  
1,399 sqft

**TYPE D1-P**  
01-12



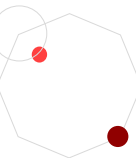
FP - FIXED WINDOW PANEL



**PROVENCE**  
RESIDENCE

**Legend:** F - Fridge DB - Distribution Board ST - Storage space WC - Water Closet W - Washer A/C - Aircon PES - Private Enclosed Space HS - Household Shelter

Area includes A/C ledge, balcony, PES, Roof Terrace and Void (where applicable). Orientation and facings will differ depending on the unit you are purchasing (please refer to key plan). All plans are not to scale and subject to changes as may be required by relevant authorities. All appliances and furniture shown in the plan are for illustration purpose only and not representation of fact. All floor areas are estimated and subjected to final survey.







# 4-BEDROOM



## TYPE D1

4 - BEDROOM  
130 sqm  
1,399 sqft

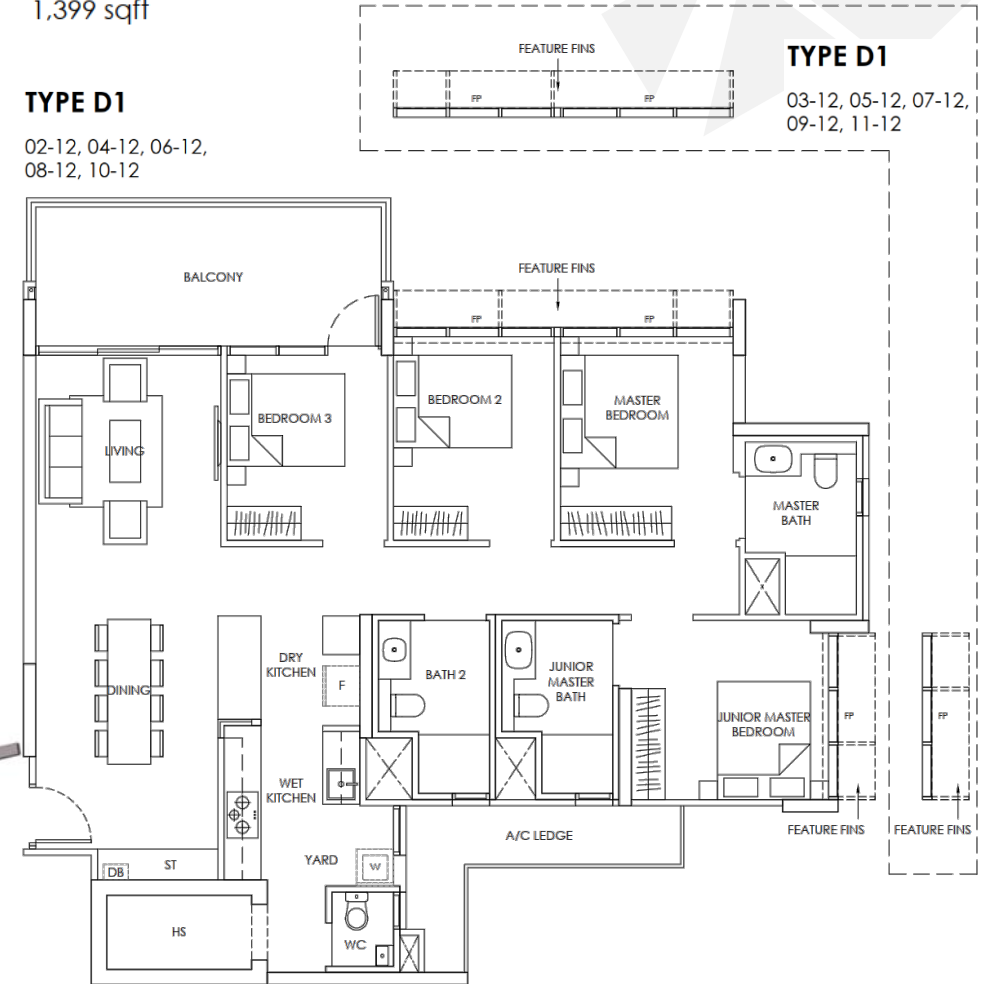


### TYPE D1

02-12, 04-12, 06-12,  
08-12, 10-12

### TYPE D1

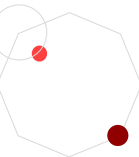
03-12, 05-12, 07-12,  
09-12, 11-12



FP - FIXED WINDOW PANEL

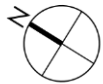
**Legend:** F - Fridge DB - Distribution Board ST - Storage space WC - WaterCloset W - Washer A/C - Aircon PES - Private Enclosed Space HS - Household Shelter

Area includes A/C ledge, balcony, PES, Roof Terrace and Void (where applicable). Orientation and facings will differ depending on the unit you are purchasing (please refer to key plan). All plans are not to scale and subject to changes as may be required by relevant authorities. All appliances and furniture shown in the plan are for illustration purpose only and not representation of fact. All floor areas are estimated and subjected to final survey.





# 4-BEDROOM PES

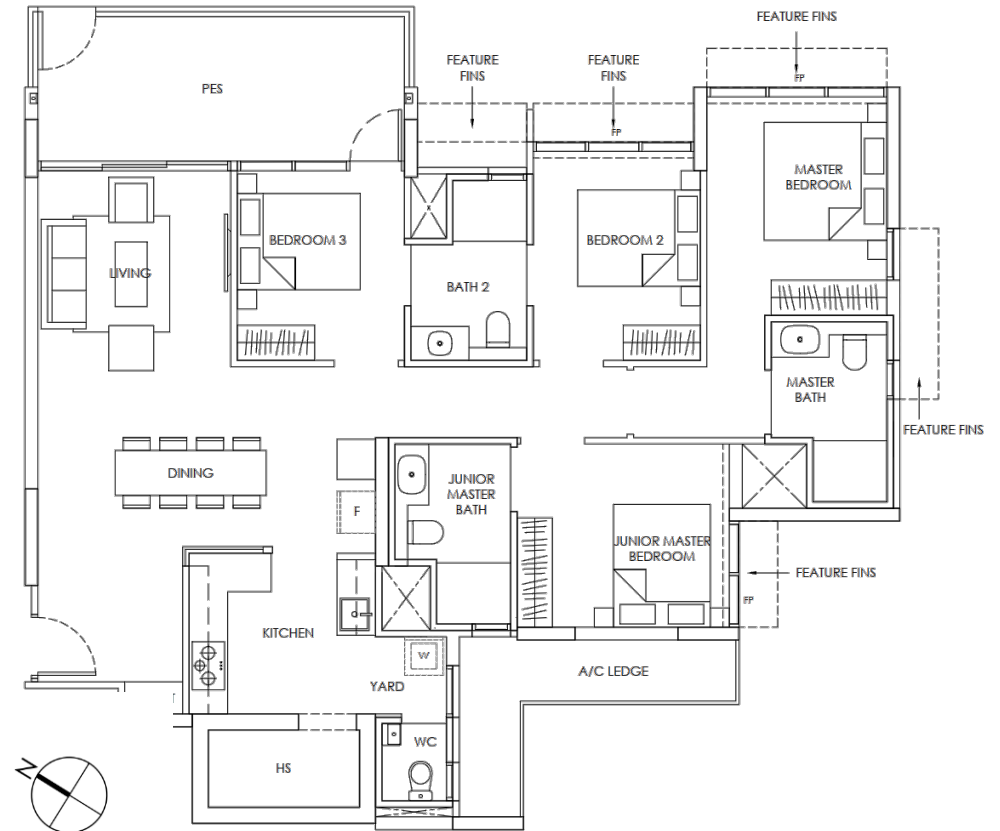


## TYPE D2-P

4 - BEDROOM  
130 sqm  
1,399 sqft

### TYPE D2-P

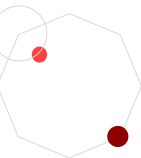
01-30



FP - FIXED WINDOW PANEL

Legend: F - Fridge DB - Distribution Board ST - Storage space WC - WaterCloset W - Washer A/C - Aircon PES - Private Enclosed Space HS - Household Shelter

Area includes A/C ledge, balcony, PES, Roof Terrace and Void (where applicable). Orientation and facings will differ depending on the unit you are purchasing (please refer to key plan). All plans are not to scale and subject to changes as may be required by relevant authorities. All appliances and furniture shown in the plan are for illustration purpose only and not representation of fact. All floor areas are estimated and subjected to final survey.







# 4-BEDROOM

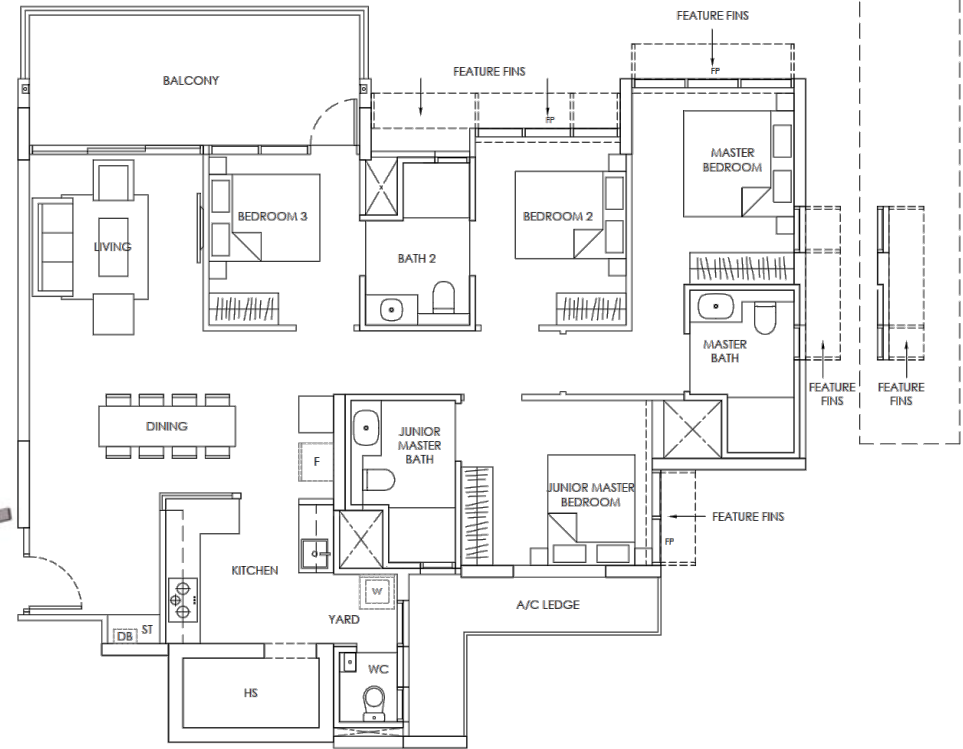
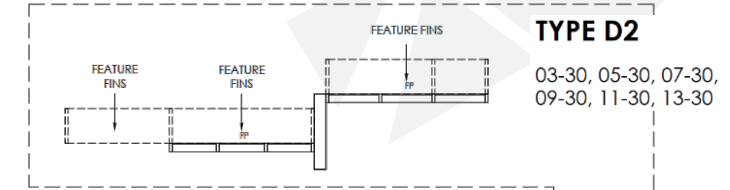


## TYPE D2

4 - BEDROOM  
130 sqm  
1,399 sqft

### TYPE D2

02-30, 04-30, 06-30,  
08-30, 10-30, 12-30



FP - FIXED WINDOW PANEL

Legend: F - Fridge DB - Distribution Board ST - Storage space WC - Water Closet W - Washer A/C - Aircon PES - Private Enclosed Space HS - Household Shelter

Area includes A/C ledge, balcony, PES, Roof Terrace and Void (where applicable). Orientation and facings will differ depending on the unit you are purchasing (please refer to key plan). All plans are not to scale and subject to changes as may be required by relevant authorities. All appliances and furniture shown in the plan are for illustration purpose only and not representation of fact. All floor areas are estimated and subjected to final survey.

