

Studio

Type A1

37 sq m / 398 sq ft

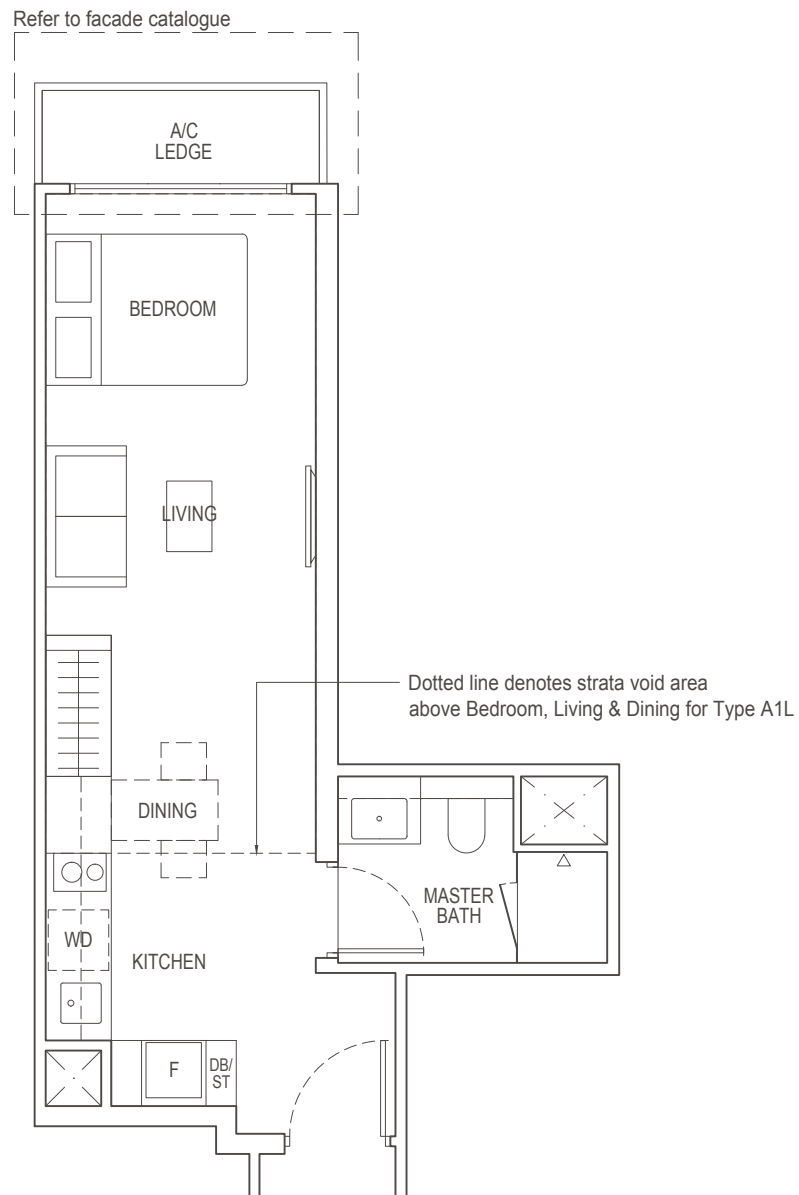
Block 2: #02-06 to #23-06, #25-06 to #35-06

Studio Loft

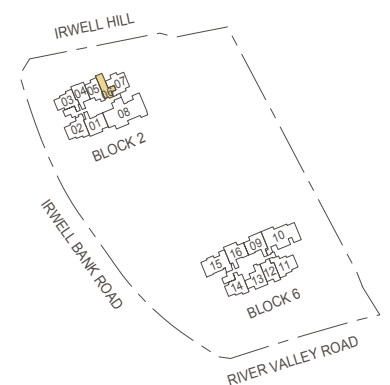
Type A1L

57 sq m / 614 sq ft

Inclusive of strata void area of
20 sq m / 215 sq ft above Bedroom, Living & Dining
Block 2: #36-06



Area includes air-con (A/C) ledge, balcony and strata void area where applicable. The plans are subject to change as may be approved by relevant authorities. All floor plans are approximate measurements only and are subject to government re-survey. The balcony shall not be enclosed unless with the approved balcony screen. For an illustration of the approved balcony screen, please refer to the diagram annexed hereto as "Annexure 1".



Key plan is not drawn to scale.



1-Bedroom + Study

Type A3S(b)

46 sq m / 495 sq ft

Block 2: #02-05, #03-05, #06-05, #09-05 to #15-05
#18-05 to #21-05, #23-05, #25-05 to #35-05

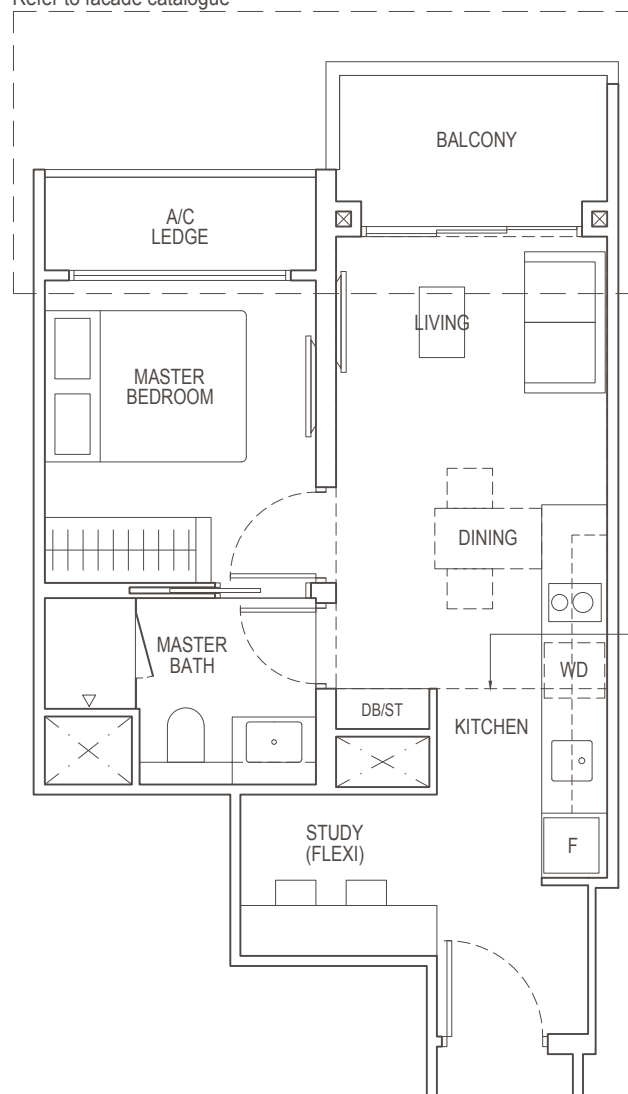
1-Bedroom + Study Loft

Type A3SL

60 sq m / 646 sq ft

Inclusive of strata void area of
14 sq m / 151 sq ft above Living & Dining
Block 2: #36-05

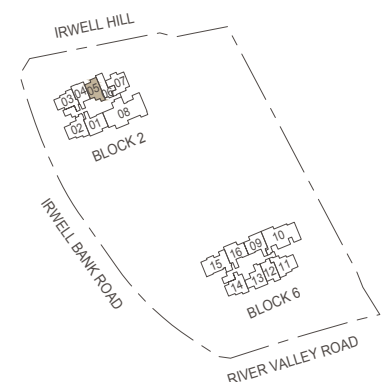
Refer to facade catalogue



Dotted line denotes strata void area above Living & Dining for Type A3SL



Area includes air-con (A/C) ledge, balcony and strata void area where applicable. The plans are subject to change as may be approved by relevant authorities. All floor plans are approximate measurements only and are subject to government re-survey. The balcony shall not be enclosed unless with the approved balcony screen. For an illustration of the approved balcony screen, please refer to the diagram annexed hereto as "Annexure 1".



Key plan is not drawn to scale.



2-Bedroom Classic

Type B1(b)

56 sq m / 603 sq ft

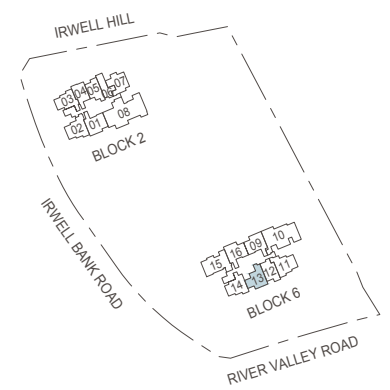
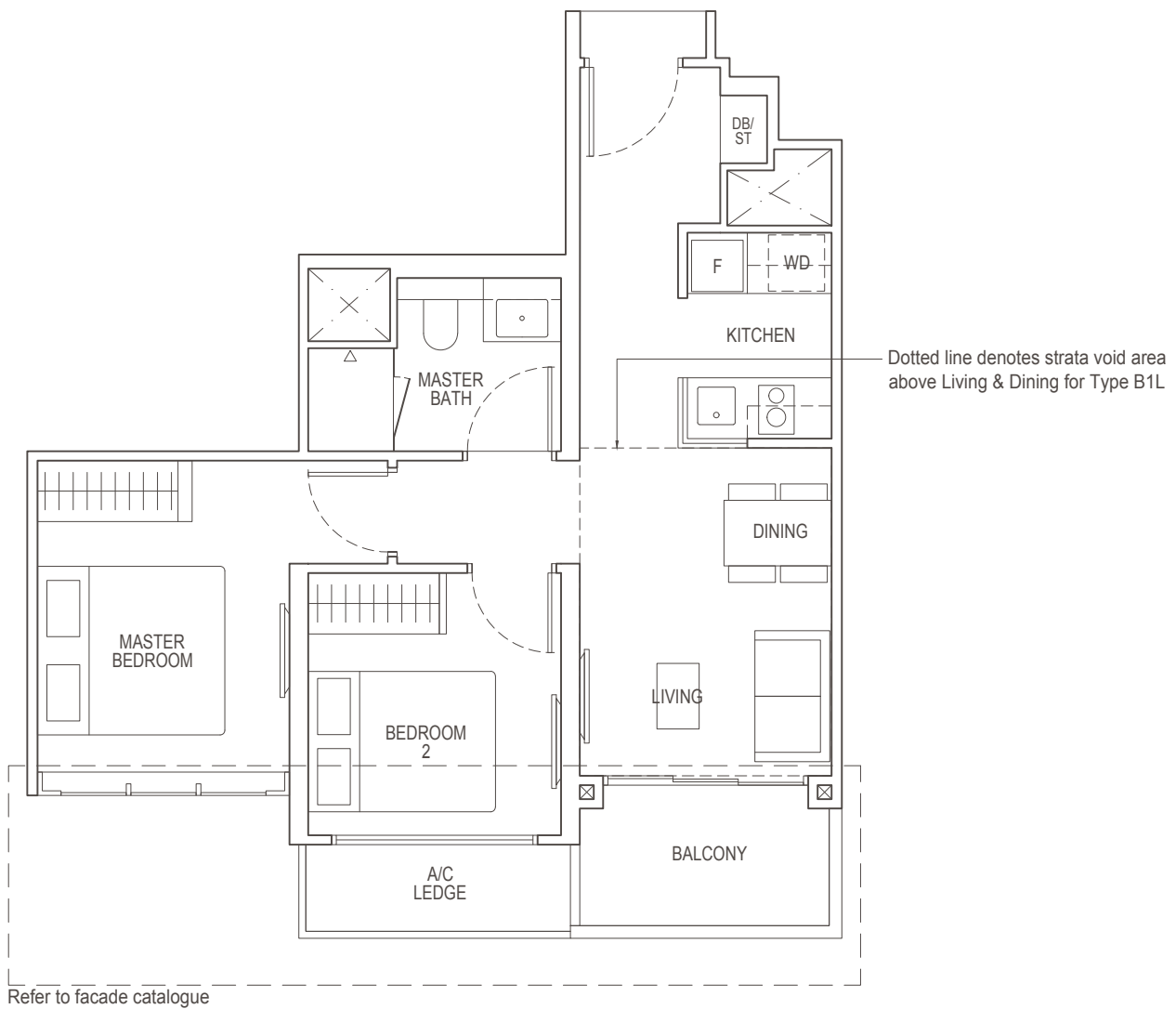
Block 6: #02-13 to #23-13, #25-13 to #35-13

2-Bedroom Classic Loft

Type B1L

67 sq m / 721 sq ft

Inclusive of strata void area of
11 sq m / 118 sq ft above Living & Dining
Block 6 : #36-13



Area includes air-con (A/C) ledge, balcony and strata void area where applicable. The plans are subject to change as may be approved by relevant authorities. All floor plans are approximate measurements only and are subject to government re-survey. The balcony shall not be enclosed unless with the approved balcony screen. For an illustration of the approved balcony screen, please refer to the diagram annexed hereto as "Annexure 1".

Key plan is not drawn to scale.

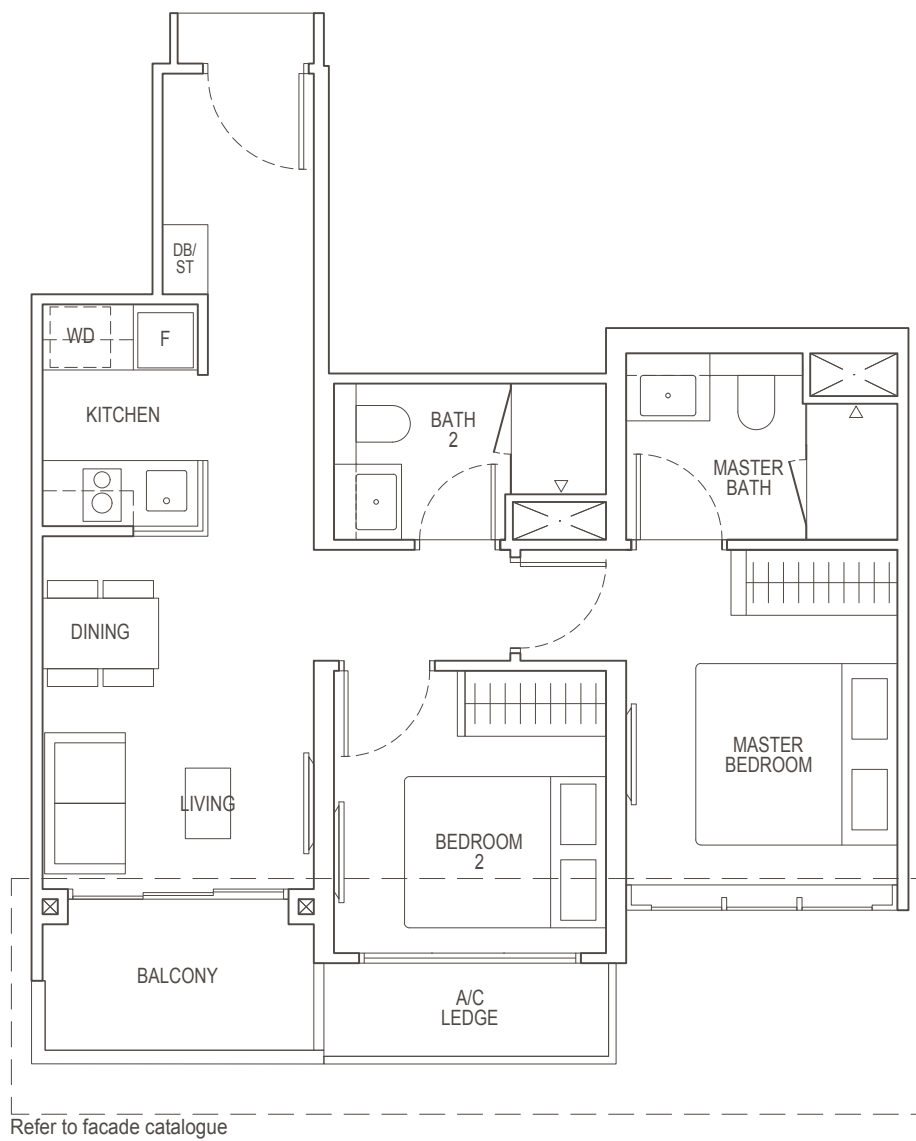


2-Bedroom Premium

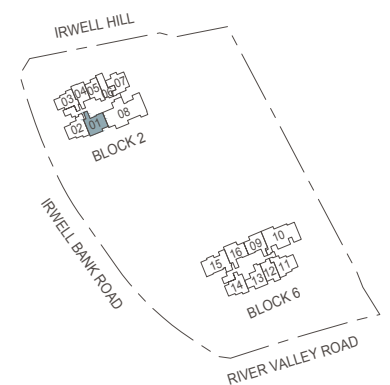
Type B5(b)

61 sq m / 657 sq ft

Block 2: #02-01 to #23-01, #25-01 to #35-01



Area includes air-con (A/C) ledge, balcony and strata void area where applicable. The plans are subject to change as may be approved by relevant authorities. All floor plans are approximate measurements only and are subject to government re-survey. The balcony shall not be enclosed unless with the approved balcony screen. For an illustration of the approved balcony screen, please refer to the diagram annexed hereto as "Annexure 1".



Key plan is not drawn to scale.



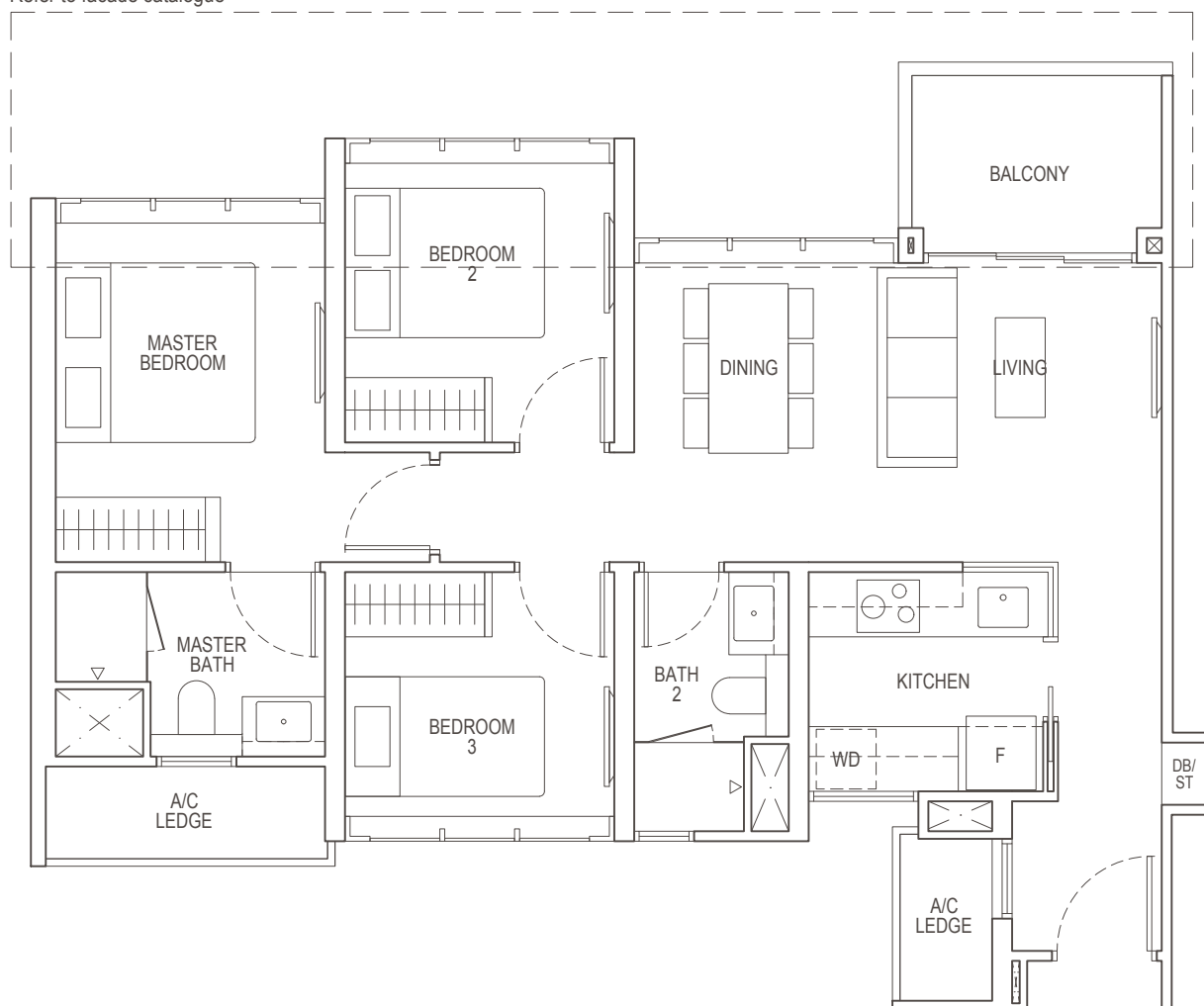
3-Bedroom Classic

Type C1(b)

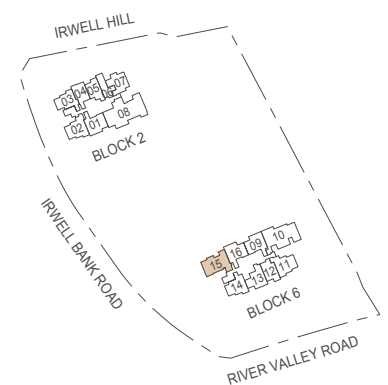
80 sq m / 861 sq ft

Block 6: #02-15 to #23-15, #25-15 to #35-15

Refer to facade catalogue



Area includes air-con (A/C) ledge, balcony and strata void area where applicable. The plans are subject to change as may be approved by relevant authorities. All floor plans are approximate measurements only and are subject to government re-survey. The balcony shall not be enclosed unless with the approved balcony screen. For an illustration of the approved balcony screen, please refer to the diagram annexed hereto as "Annexure 1".



Key plan is not drawn to scale.

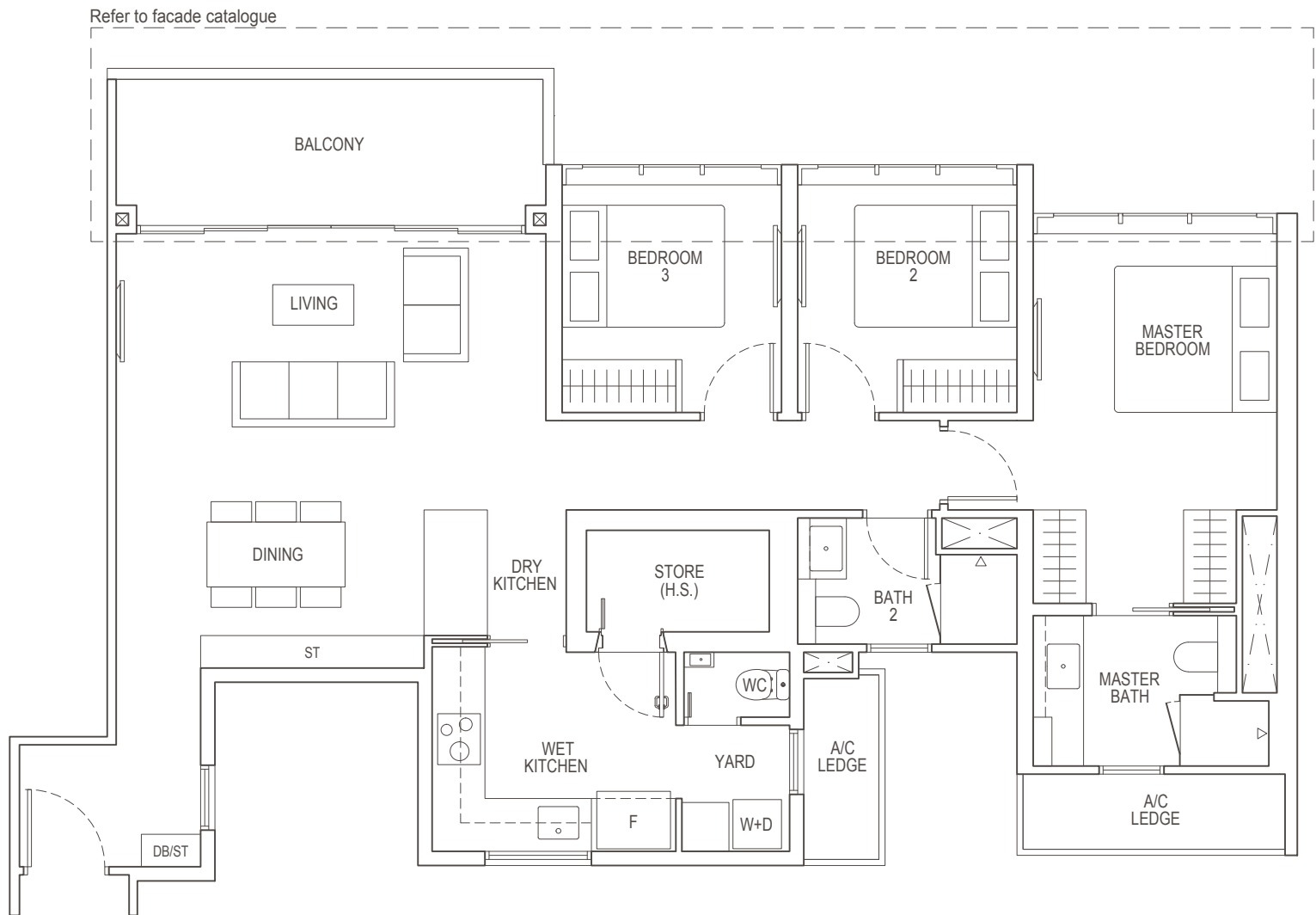


3-Bedroom Premium

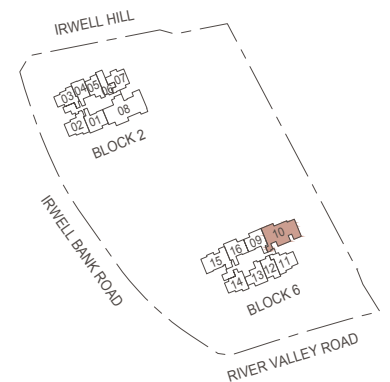
Type C2(b)

118 sq m / 1270 sq ft

Block 6: #02-10 to #23-10, #25-10 to #35-10



Area includes air-con (A/C) ledge, balcony and strata void area where applicable. The plans are subject to change as may be approved by relevant authorities. All floor plans are approximate measurements only and are subject to government re-survey. The balcony shall not be enclosed unless with the approved balcony screen. For an illustration of the approved balcony screen, please refer to the diagram annexed hereto as "Annexure 1".



Key plan is not drawn to scale.

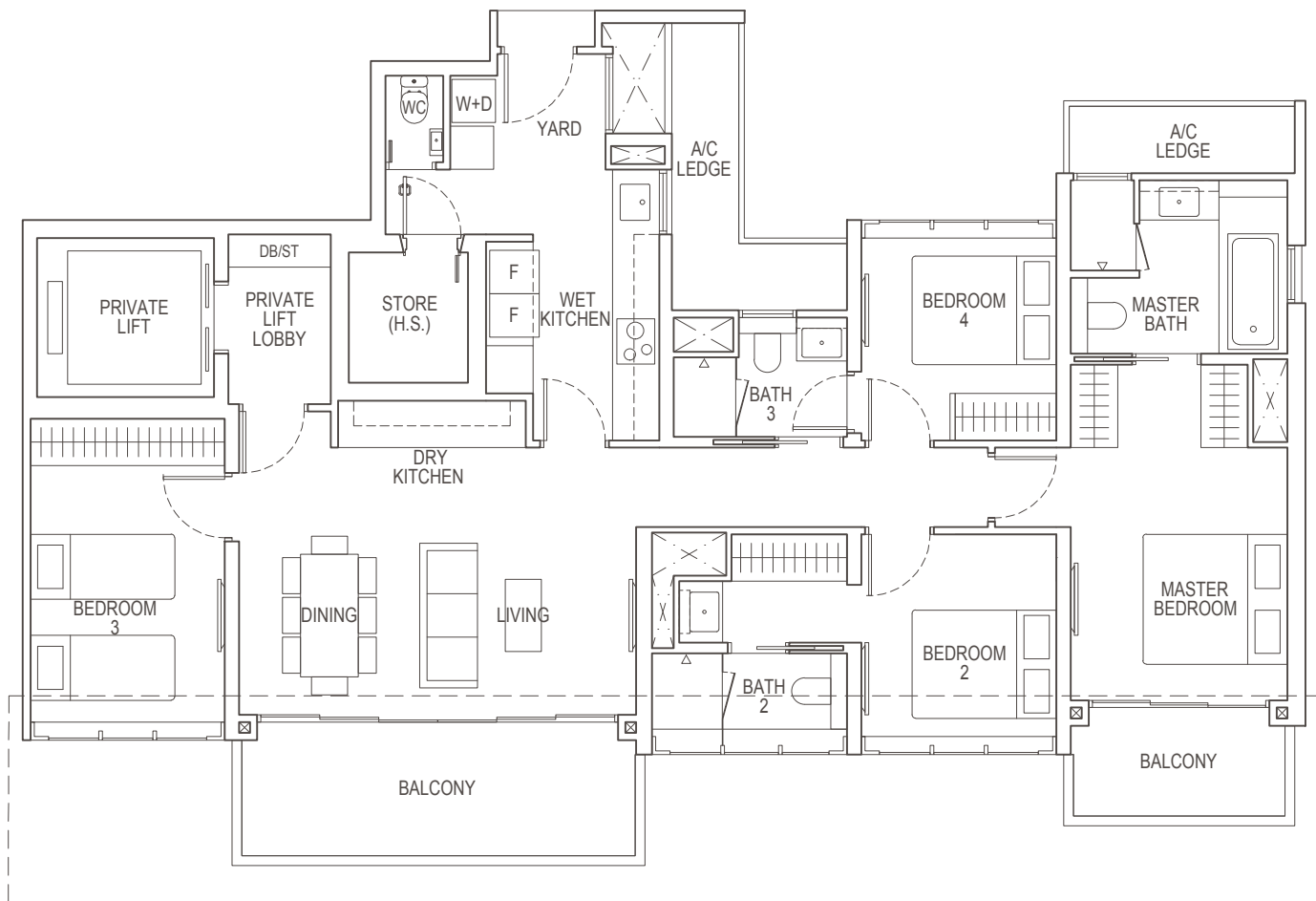


4-Bedroom Premium

Type D2(b)

147 sq m / 1582 sq ft

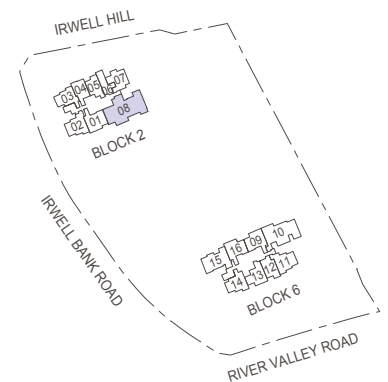
Block 2: #02-08 to #04-08, #08-08, #10-08 to #16-08
#19-08 to #22-08, #25-08 to #29-08, #31-08



Refer to facade catalogue



Area includes air-con (A/C) ledge, balcony and strata void area where applicable. The plans are subject to change as may be approved by relevant authorities. All floor plans are approximate measurements only and are subject to government re-survey. The balcony shall not be enclosed unless with the approved balcony screen. For an illustration of the approved balcony screen, please refer to the diagram annexed hereto as "Annexure 1".



Key plan is not drawn to scale.

